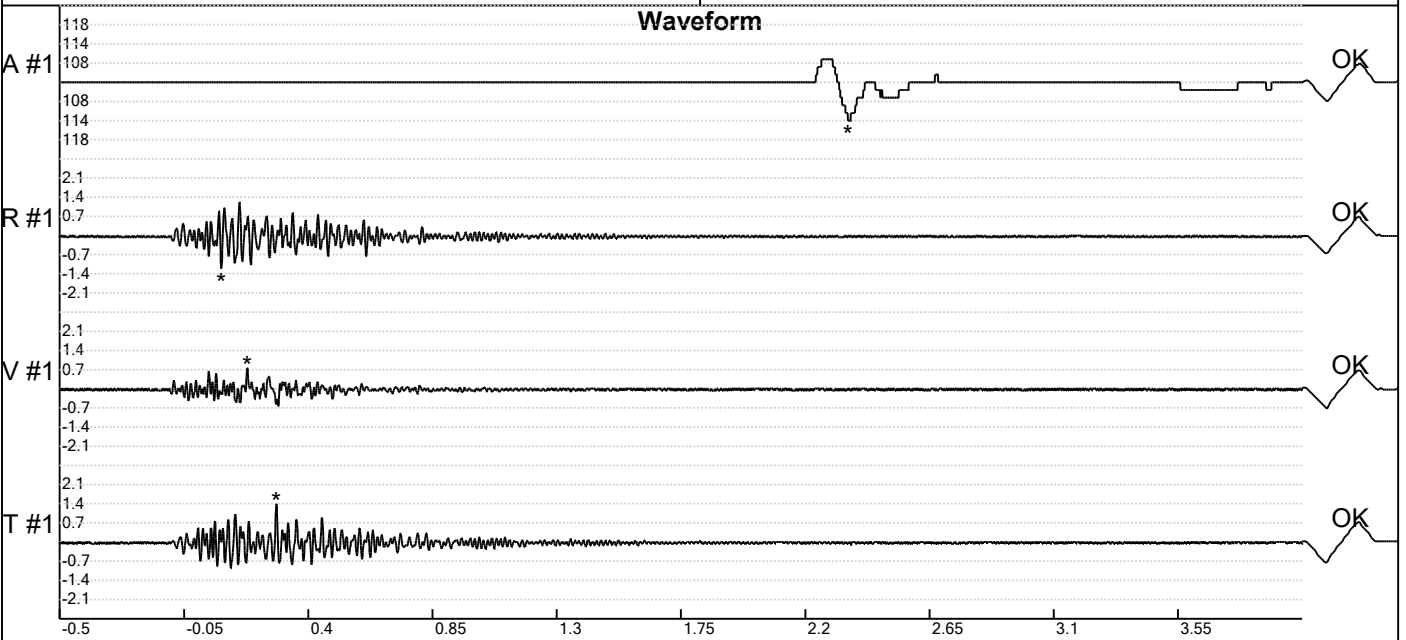


Carrière de BRS  
 Comblain -5  
 Tir du 03/12/2020  
 Sismographe placé au  
 261 Halleux  
 4710 Comblain-au-Pont

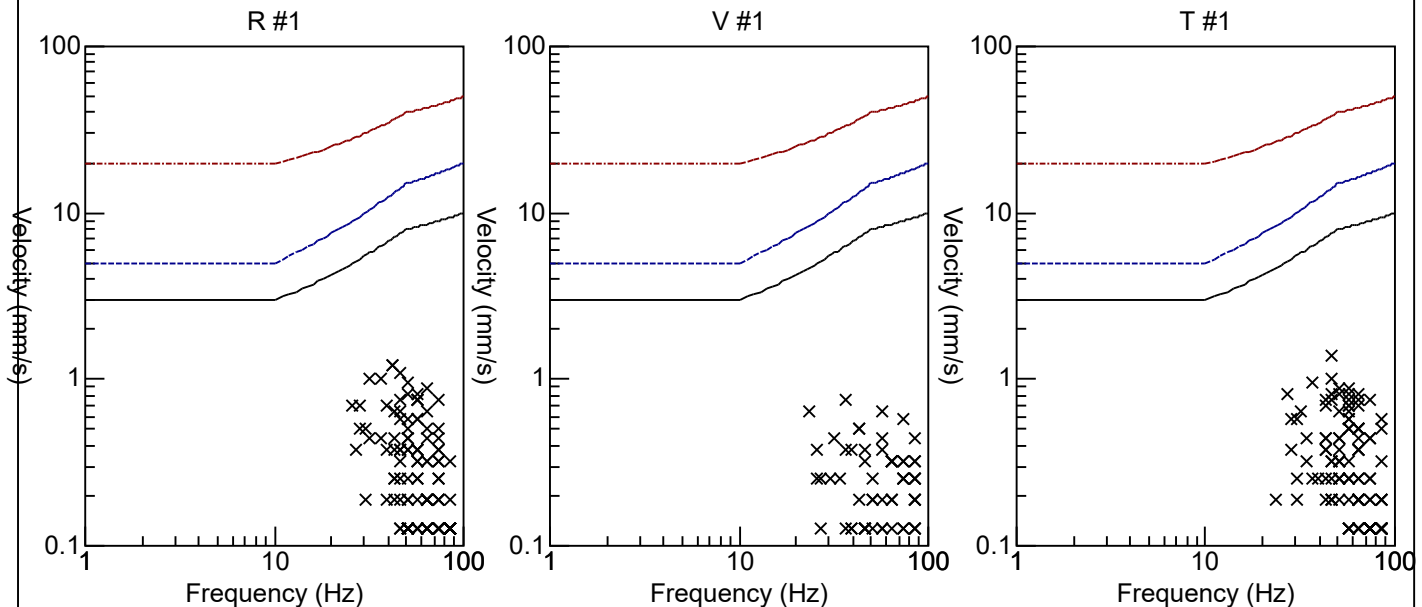
Record: 1789202012031601246.dtb  
 Number: 246  
 Seismograph: Mini-Seis 1789  
 Type of Record: Waveform  
 Date: 03-12-20 16:01:00  
 Duration: 4.50 Seconds  
 Sample Rate: 1024  
 Pre-Trigger: 0.5 Seconds  
 Seismic Trigger: 0.508 mm/s  
 Acoustic Trigger: 142.1 dB  
 Seismic Gain: 63.5  
 Acoustic Gain: 141.9 dB  
 Voltage: 6.5

**Peaks and Frequencies**  
**PPV Maximum (Geo #1): 1.4 mm/s**  
 Acoustic #1: 114.0 dB @ 5.6 Hz (2.354492 s)  
 Radial #1: 1.21 mm/s @ 42.6 Hz (0.08496094 s)  
 Vertical #1: 0.762 mm/s @ 36.5 Hz (0.1787109 s)  
 Transverse #1: 1.4 mm/s @ 46.5 Hz (0.2841797 s)

**Graph Information**  
 Time Range: -0.5 s to 4 s, Intervals: 0.4500 Seconds



**Velocity vs. Frequency (DIN 4150-3 Tab 1)**



Carrière de BRS  
 Comblain -5  
 Tir du 03/12/2020  
 Sismographe placé au  
 261 Halleux  
 4710 Comblain-au-Pont

Record: 1789202012031601246.dtb  
 Number: 246  
 Seismograph: Mini-Seis 1789  
 Type of Record: Waveform  
 Date: 03-12-20 16:01:00  
 Duration: 4.50 Seconds  
 Sample Rate: 1024  
 Pre-Trigger: 0.5 Seconds  
 Seismic Trigger: 0.508 mm/s  
 Acoustic Trigger: 142.1 dB  
 Seismic Gain: 63.5  
 Acoustic Gain: 141.9 dB  
 Voltage: 6.5

**Peaks and Frequencies**  
**PPV Maximum (Geo #1): 1.4 mm/s**  
 Acoustic #1: 114.0 dB @ 5.6 Hz (2.354492 s)  
 Radial #1: 1.21 mm/s @ 42.6 Hz (0.08496094 s)  
 Vertical #1: 0.762 mm/s @ 36.5 Hz (0.1787109 s)  
 Transverse #1: 1.4 mm/s @ 46.5 Hz (0.2841797 s)

**Graph Information**  
 Time Range: -0.5 s to 4 s, Intervals: 0.4500 Seconds

